

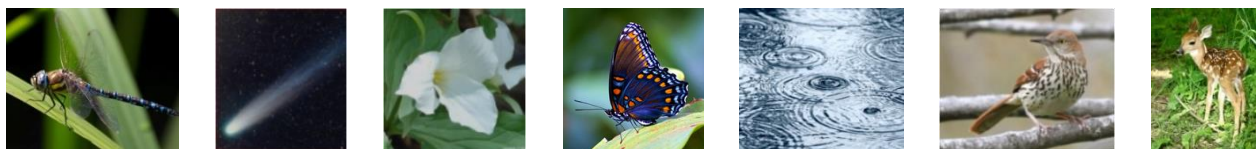
Nature's Tapestry



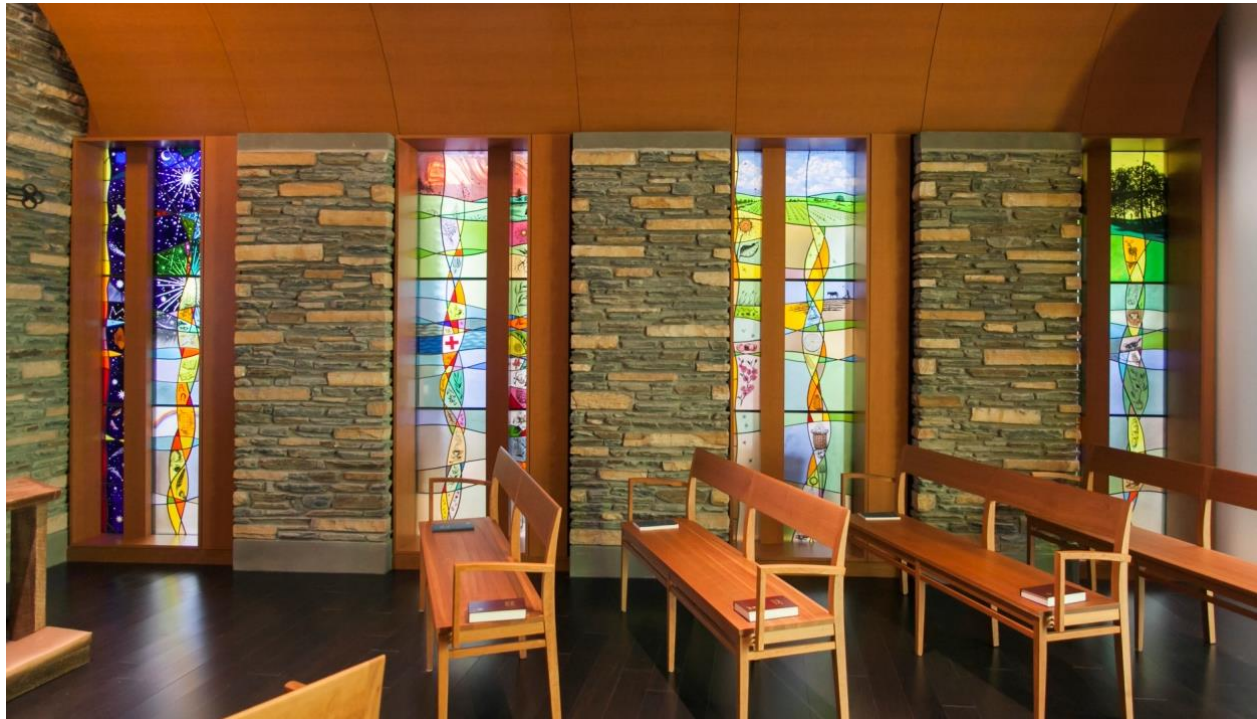
Artist Statement: “As an artist creating artwork within a hospital, I want to contribute to the healing and health education taking place here. The chapel itself was created as a quiet haven for reflection. The stained glass windows were inspired by my experiences of walking through the beautiful landscape of this part of Georgia, learning about the history of Braselton and listening to stories that members of the Braselton family shared with me. The natural beauty of this place is interwoven with the history of the community. I hope that my windows will encourage reflection on the stories told within them, and invite you to explore more deeply the region which inspired them. We are all born into the garden of this world, and if we will sustain this gift, it can offer health and wellness to us and future generations.”

Laura Mentor

Exterior stained glass window, 14'-0" h x 11'-0" w. Artist Laura Mentor utilizes ancient stained glass painting and firing techniques to create imagery that glows with pure light and color. Panels Left to Right: Blowing Grasses, Starry Night, Treetop, Meadow & Forest Floor, Moths & Butterflies, Rain, Water, Fishes, Birds, Animals



Inspiration: Flora and Fauna and elements of nature indigenous to Braselton, Georgia became the inspiration for the series of stained glass windows.



Interior stained glass windows, 9'-0" h x 3'-0" w. Windows left to right are designed to visualize attributes of Henry Edward Braselton for whom the chapel is named, including Illumination, Healing, Industry & Stewardship

Community Roots: A long held desire to see a modern, full-service hospital in the region found its fulfillment in Northeast Georgia Medical Center Braselton. Plans for the beautiful chapel offered a perfect opportunity to the Braselton Family to honor Henry Edward Braselton, a founding father. In naming the chapel after their Husband, Father and Grandfather, members of the Braselton family wanted to create a peaceful place of respite that would connect all members of the community while celebrating the values of the man they loved along with rural life and the agricultural connection that tied them together as a community and as good stewards of the earth.

Process: After learning from the Medical Center Foundation that the Chapel Donor family would like to tell the story of the people of Braselton through the stained glass windows in the Chapel, Distinctive Art Source immediately contacted stained glass artist Laura Mentor to discuss the project. Knowing Laura was not only an exceptional stained glass artist but also a storyteller made her a perfect fit for this project.

Content: Laura Mentor, artist, and Barbara Harriman, Distinctive Art Source, met many members of the Braselton family as well as Nancy Colston and Maggie James of The Medical Center Foundation. During time spent together, the Braseltons generously shared stories and memories of their father, and husband. Laura Mentor spent many additional hours visiting the family home, meeting additional members of the family, touring Braselton and reading recently books on the history of Braselton.

Proposal: A few months later Laura and DAS met again with the Braselton family and The Medical Center Foundation to reveal watercolor renderings of proposed compositions for each window. There were tears of joy as the renderings were reviewed and the family discovered the inclusion of many personal elements including their family cat and scenes depicting their father in the fields and woods. Laura's concept to illuminate attributes of the man for whom that chapel was named in the interior windows while celebrate the local beauty and importance of nature in the exterior window resonated with everyone. It was important to the donor family that the chapel create a place of respite for all visitors without becoming a shrine to the man for whom it had been named.



Illumination

The guiding star, candle and oil lamp symbolize the light of knowledge, wisdom and spiritual life. Like moths drawn to light, our mind and spirit are drawn to the light of understanding. Access to education, schools and libraries was part of Braselton's early development, and are central to its community life today.



Healing

From the first regional settlers to the present day, care-givers have traveled into rural areas to provide care. Healing symbols such as a mortar and pestle, clean water, and the red cross are seen in this window along with healing plants known and used before the advent of modern pharmaceuticals. Leaves, flowers, fruits, berries used in the form of teas and tinctures and poultices are also visible.



Industry

The founding farmers and traders of this rural area are represented here. Honeybees are a traditional symbol of industriousness, a quality needed to build a healthy and sustainable economy. Images reflecting a history of cultivation, milling, trade, tools, crops and livestock appear in this window.



Stewardship

The Braselton area is blessed with a wealth of beauty and natural resources. These gifts are appreciated today because citizens and community builders of the past worked to balance growth with conservation. The stewardship of land and the community have gone hand in hand, ensuring that future generations may enjoy the bounty of this place.

Fabrication: Laura's worked on the 5 windows (57 panels) sketching, cutting, painting, and firing glass for a year sharing progress photos with the donor family throughout the process. The now installed windows celebrate the personal relationship and memories Henry Braselton's family share while also illuminating and connecting visitors to the values of the town of Braselton and the ever important role of nature in this community.

Community Response: "Today I dropped by to see the chapel glass art. I was so taken I'm speechless. I could have spent hours there. Having grown up in this area I could so relate to the many features. Many related to the area and those special touches for the Braselton's themselves!!!! Even the fraternity symbol!!! How did she do that? I will take my family there to share, It is a GA girl's life reflections!!! I hope and believe they (donor family) will be as touched as I." *Carol Burrell, President and CEO North Georgia Health System.*